

SIDE GALLERY

PAD
L O N D O N
ART + DESIGN





JOAQUIM TENREIRO

Bench

Manufactured by Tenreiro Moveis e Decorações

Brasil, 1950

Jacaranda wood, glass, upholstery

Measurements

354 cm x 75 cm x 75h cm (35 cm seat height)

139,37 in x 29,52 in x 29,52h in (13,77 in seat height)

Provenance

Flavio Dumortout de Mendoga, close friend, patron, and lawyer of Joaquim Tenreiro (Rio de Janeiro)

Literature

Soraia Cals, Tenreiro, Rio de Janeiro, 2000

Certificate

Accompanied by a certificate of authenticity by Flavio Dumortout's inheritor

Biography

Joaquim Tenreiro (1906-1992) was among leading furniture designers and visual artists in modernist Brazilian furniture making in the mid-20th century.

A forerunner in the use of rediscovered raw materials as well as the creator of a new formal language in 20th century Brazilian furniture design, he drew on the lessons of past furniture making as a vital source, not only in the mastery of technical and constructive solutions, but also in the aesthetic experience, craftsmanship, and the cultural meaning of his production. His exquisitely crafted pieces evoke a refined coexistence of traditional values and modern aesthetics, strongly bound to the Brazilian cultural milieu.

Born in Portugal to a family with a great tradition in furniture making, he moved to Brazil at the age of 22 and embraced a career as a designer by working at various furniture manufacturers such as Leandro Martins, Francisco Gomes and Laubisch & Hirth. Tenreiro proposed a contemporary language and advocated the idea that Brazilian furniture should be "formally light...A lightness which has nothing to do with weight itself, but with graciousness, and the functionality of spaces.





JOAQUIM TENREIRO

Single armchair model "Redonda"

Manufactured by Tenreiro Moveis e Decorações

Brasil, 1950

Jacaranda wood, upholstery

Measurements

94 cm x 83 cm x 63h cm (41 cm seat height)

37 in x 32,67 in x 24,8h in (16,14 in seat height)

Provenance

Flavio Dumortout de Mendonça, close friend, patron, and lawyer of Joaquim Tenreiro (Rio de Janeiro)

Literature

Soraia Cals, Tenreiro, Rio de Janeiro, 2000

Certificate

Accompanied by a certificate of authenticity by Flavio Dumortout's inheritor

Biography

Joaquim Tenreiro (1906-1992) was among leading furniture designers and visual artists in modernist Brazilian furniture making in the mid-20th century. A forerunner in the use of rediscovered raw materials as well as the creator of a new formal language in 20th century Brazilian furniture design, he drew on the lessons of past furniture making as a vital source, not only in the mastery of technical and constructive solutions, but also in the aesthetic experience, craftsmanship, and the cultural meaning of his production. His exquisitely crafted pieces evoke a refined coexistence of traditional values and modern aesthetics, strongly bound to the Brazilian cultural milieu.

Born in Portugal to a family with a great tradition in furniture making, he moved to Brazil at the age of 22 and embraced a career as a designer by working at various furniture manufacturers such as Leandro Martins, Francisco Gomes and Laubisch & Hirth. Tenreiro proposed a contemporary language and advocated the idea that Brazilian furniture should be "formally light...A lightness which has nothing to do with weight itself, but with graciousness, and the functionality of spaces.





JOAQUIM TENREIRO

Coffee table with five woods

Manufactured by Tenreiro Moveis e Decorações

Brasil, 1950

Five different types of hard wood (jacaranda, imbuir, roxinho, Pau marfim and cobréuva), bonded laminated frame with solid lathed joints

Measurements

120 cm x 58 cm x 36h cm

47,24 in x 22,83 in x 14,17h in

Edition

Unique piece

Provenance

Flavio Dumortout de Mendoça, close friend, patron and lawyer of Joaquim Tenreiro

Certificate

Accompanied by a certificate of authenticity by Flavio Dumortout's inheritor

Literature

Soraia Cals, Tenreiro, Rio de Janeiro, 2000

Concept

Forty years before the widespread use of AutoCAD and other computer-aided design programs, Joaquim Tenreiro built his multi-wood series: the "Three-Legged Chair", the Five Woods low chair" or the "Five Woods cofee table", a paragon of fluidity and dynamic expression in wood. Stripped of appendages, horizontal rails, and right angles—impediments to the eye—Tenreiro's cupped seat opens like a parabolic curve in space, suggesting infinite motion. The table's complex construction transcended conventional methods of joinery and anticipated by a half century the stack-laminated chairs of Julia Krantz and the bonded plywood furniture of contemporary designers like Jeroen Verhoeven. The woodworking son of a woodworker, Tenreiro championed the use of native Brazilian hardwoods, which he combined to expressive effect. In the present lot, his alternation of light and dark specimens further speeds the eye. Comprising solid stacked sections, not veneers applied to a frame, "Five Woods coffee table" triumphantly realizes the modernist maxim that decoration must be intrinsic to form. But Tenreiro's fluent seat sweeps away the rigid profiles of those icons preceding it: Le Corbusier's crimped chaise and Alvar Aalto's molded seat sections. Why summon those spirits? Tenreiro modulated the austere rationalism of European modernism with vernacular Brazilian woodworking traditions and so revitalized his country's regressive furniture industry. "I have always been restless. What I did was reformulate the dimensions of Brazilian furniture, because it was really uncomfortable. I have defended craftsmanship with all my heart, against the kind of industrialization that debased furniture" (Soraia Cals, Tenreiro, Rio de





JOAQUIM TENREIRO

Pair of armchairs model “Leve”

Manufactured by Langenbach & Tenreiro Ltda
Brasil, 1942
Jacaranda, upholstery

Measurements

61 cm x 74 cm x 71h cm
24 in x 28 in x 29h in

Literature

Móvel Brasileiro Moderno, Vasconcellos and Brage, ppg. 85-87 Tenreiro, Cals, pg. 69

Provenance

Private collection, Sao Paulo

Biography

Joaquim Tenreiro (1906-1992) was among leading furniture designers and visual artists in modernist Brazilian furniture making in the mid-20th century. A forerunner in the use of rediscovered raw materials as well as the creator of a new formal language in 20th century Brazilian furniture design, he drew on the lessons of past furniture making as a vital source, not only in the mastery of technical and constructive solutions, but also in the aesthetic experience, craftsmanship, and the cultural meaning of his production. His exquisitely crafted pieces evoke a refined coexistence of traditional values and modern aesthetics, strongly bound to the Brazilian cultural milieu.

Born in Portugal to a family with a great tradition in furniture making, he moved to Brazil at the age of 22 and embraced a career as a designer by working at various furniture manufacturers such as Leandro Martins, Francisco Gomes and Laubisch & Hirth.

Tenreiro proposed a contemporary language and advocated the idea that Brazilian furniture should be “formally light...A lightness which has nothing to do with weight itself, but with graciousness, and the functionality of spaces.





JOAQUIM TENREIRO

Pair of armchairs

Manufactured by Tenreiro Moveis e Decorações

Brasil, 1950

Jacaranda wood, upholstery

Measurements

71 cm x 81 cm x 67h cm (37 cm seat height)

27,95 in x 31,88 in x 26,37h in (14,56 in seat height)

Edition

Version in jacaranda wood of his iconic iron version. Unique piece.

Provenance

Flavio Dumortout de Mendoça, close friend, patron, and lawyer of Joaquim Tenreiro (Rio de Janeiro)

Certificate

Accompanied by a certificate of authenticity by Flavio Dumortout's inheritor

Biography

Joaquim Tenreiro (1906-1992) was among leading furniture designers and visual artists in modernist Brazilian furniture making in the mid-20th century.

A forerunner in the use of rediscovered raw materials as well as the creator of a new formal language in 20th century Brazilian furniture design, he drew on the lessons of past furniture making as a vital source, not only in the mastery of technical and constructive solutions, but also in the aesthetic experience, craftsmanship, and the cultural meaning of his production. His exquisitely crafted pieces evoke a refined coexistence of traditional values and modern aesthetics, strongly bound to the Brazilian cultural milieu.

Born in Portugal to a family with a great tradition in furniture making, he moved to Brazil at the age of 22 and embraced a career as a designer by working at various furniture manufacturers such as Leandro Martins, Francisco Gomes and Laubisch & Hirth. Tenreiro proposed a contemporary language and advocated the idea that Brazilian furniture should be "formally light...A lightness which has nothing to do with weight itself, but with graciousness, and the functionality of spaces.





JOAQUIM TENREIRO

Rare set of 8 chairs variant of the “Cadeira baixa para quarto”
 Manufactured by Tenreiro Moveis e Decorações
 Brasil, 1950
 Solid jacaranda structure and cane

Measurements

50 cm x 55 cm x 87h cm.
 16,68 in x 21,65 in x 34,25h in.

Literature

Joaquim Tenreiro, by Soraia Cals and Maria Cecilia Loschiavo dos Santos, edições Bolsa de Arte, Rio de Janeiro 1998. Pages 27 (similar estrutura) 96, 97 (lounge chair version).
 Desenho da utopia, by Ruy Teixeira and Jayme Vargas, edições Olhares. Sao Paulo, 2016. No page.

Provenance

Penteado family (Rio de Janeiro)

Details

Marked and labelled with the stamp from the manufacturer

Biography

Joaquim Tenreiro (1906-1992) was among leading furniture designers and visual artists in modernist Brazilian furniture making in the mid-20th century. A forerunner in the use of rediscovered raw materials as well as the creator of a new formal language in 20th century Brazilian furniture design, he drew on the lessons of past furniture making as a vital source, not only in the mastery of technical and constructive solutions, but also in the aesthetic experience, craftsmanship, and the cultural meaning of his production. His exquisitely crafted pieces evoke a refined coexistence of traditional values and modern aesthetics, strongly bound to the Brazilian cultural milieu. Born in Portugal to a family with a great tradition in furniture making, he moved to Brazil at the age of 22 and embraced a career as a designer by working at various furniture manufacturers such as Leandro Martins, Francisco Gomes and Laubisch & Hirth. Tenreiro proposed a contemporary language and advocated the idea that Brazilian furniture should be “formally light...A lightness which has nothing to do with weight itself, but with graciousness, and the functionality of spaces.





JOAQUIM TENREIRO

Set of Six Chairs

Manufactured by Tenreiro Movéis & Decorações

Brasil, 1960

Jacaranda, cane

Measurements

50 cm x 53 cm x 80h cm

19,7 in x 20,7 in x 31,5h in

Literature

Sorala Cals, Tenreiro, Rio de Janeiro, 1998, p. 127

Aric Chen, Brazil Modern, Monacelli Press, New York city 2016, p. 76 y 77

Maria Cecilia Loschiavo dos Santos, Modern Furniture in Brazil, Olhares, Sao Paulo 2015, p. 87 and 121

Ruy Teixeira e Jayme Vargas, Desenho da Utopia, Olhares, Sao Paulo 2016, p. 51, 70 and 113.

Provenance

Private collection, Sao Paulo

Essay

"A principle to which I felt modern Brazilian furniture should adhere: lightness. Lightness which has nothing to do with the weight per se, but with grace and functionality in space." Joaquim Tenreiro.

Biography

Joaquim Tenreiro (1906-1992) was among leading furniture designers and visual artists in modernist Brazilian furniture making in the mid-20th century. A forerunner in the use of rediscovered raw materials as well as the creator of a new formal language in 20th century Brazilian furniture design, he drew on the lessons of past furniture making as a vital source, not only in the mastery of technical and constructive solutions, but also in the aesthetic experience, craftsmanship, and the cultural meaning of his production. His exquisitely crafted pieces evoke a refined coexistence of traditional values and modern aesthetics, strongly bound to the Brazilian cultural milieu.

Born in Portugal to a family with a great tradition in furniture making, he moved to Brazil at the age of 22 and embraced a career as a designer by working at various furniture manufacturers such as Leandro Martins, Francisco Gomes and Laubisch & Hirth.

Tenreiro proposed a contemporary language and advocated the idea that Brazilian furniture should be "formally light...A lightness which has nothing to do with weight itself, but with graciousness, and the functionality of spaces.





JOAQUIM TENREIRO

Coffee table

Manufactured by Tenreiro Moveis e Decorações

Brasil, 1950

Jacaranda wood, marble "beige snake"

Measurements

130 cm x 55 cm x 32h cm

51,18 in x 21,65 in x 12,59h in

Provenance

Flavio Dumortout de Mendonça, close friend, patron, and lawyer of Joaquim Tenreiro (Rio de Janeiro)

Literature

Soraia Cals, Tenreiro, Rio de Janeiro, 2000, p. 100

Certificate

Accompanied by a certificate of authenticity by Flavio Dumortout's inheritor

Biography

Joaquim Tenreiro (1906-1992) was among leading furniture designers and visual artists in modernist Brazilian furniture making in the mid-20th century.

A forerunner in the use of rediscovered raw materials as well as the creator of a new formal language in 20th century Brazilian furniture design, he drew on the lessons of past furniture making as a vital source, not only in the mastery of technical and constructive solutions, but also in the aesthetic experience, craftsmanship, and the cultural meaning of his production. His exquisitely crafted pieces evoke a refined coexistence of traditional values and modern aesthetics, strongly bound to the Brazilian cultural milieu.

Born in Portugal to a family with a great tradition in furniture making, he moved to Brazil at the age of 22 and embraced a career as a designer by working at various furniture manufacturers such as Leandro Martins, Francisco Gomes and Laubisch & Hirth. Tenreiro proposed a contemporary language and advocated the idea that Brazilian furniture should be "formally light...A lightness which has nothing to do with weight itself, but with graciousness, and the functionality of spaces.





JOAQUIM TENREIRO

Side table

Manufactured by Tenreiro Moveis e Decorações

Brazil, 1950

Jacaranda, glass

Measurements

75 cm x 50 cm x 71h cm

29,52 in x 19,68 in x 27,95h in

Literature

Ruy Teixeira e Jayme Vargas, Desenho da Utopia, Olhares, Sao Paulo 2016

Biography

Joaquim Tenreiro (1906-1992) was among leading furniture designers and visual artists in modernist Brazilian furniture making in the mid-20th century.

A forerunner in the use of rediscovered raw materials as well as the creator of a new formal language in 20th century Brazilian furniture design, he drew on the lessons of past furniture making as a vital source, not only in the mastery of technical and constructive solutions, but also in the aesthetic experience, craftsmanship, and the cultural meaning of his production. His exquisitely crafted pieces evoke a refined coexistence of traditional values and modern aesthetics, strongly bound to the Brazilian cultural milieu.

Born in Portugal to a family with a great tradition in furniture making, he moved to Brazil at the age of 22 and embraced a career as a designer by working at various furniture manufacturers such as Leandro Martins, Francisco Gomes and Laubisch & Hirth.

Tenreiro proposed a contemporary language and advocated the idea that Brazilian furniture should be "formally light...A lightness which has nothing to do with weight itself, but with graciousness, and the functionality of spaces."





JOAQUIM TENREIRO

Side table

Manufactured by Tenreiro Moveis e Decorações
Brazil, 1960
Jacaranda, glass

Measurements

60 cm diameter x 54,5 cm height
23,62 in diameter x 21,45 in height

Literature

André Se frin, Tenreiro, catalogue raisonné, Éditions Bolsa de Arte, Rio de Janeiro, 1998, page 51.

Provenance

Private collection, Sao Paulo

Biography

Joaquim Tenreiro (1906-1992) was among leading furniture designers and visual artists in modernist Brazilian furniture making in the mid-20th century. A forerunner in the use of rediscovered raw materials as well as the creator of a new formal language in 20th century Brazilian furniture design, he drew on the lessons of past furniture making as a vital source, not only in the mastery of technical and constructive solutions, but also in the aesthetic experience, craftsmanship, and the cultural meaning of his production. His exquisitely crafted pieces evoke a refined coexistence of traditional values and modern aesthetics, strongly bound to the Brazilian cultural milieu.

Born in Portugal to a family with a great tradition in furniture making, he moved to Brazil at the age of 22 and embraced a career as a designer by working at various furniture manufacturers such as Leandro Martins, Francisco Gomes and Laubisch & Hirth.

Tenreiro proposed a contemporary language and advocated the idea that Brazilian furniture should be "formally light...A lightness which has nothing to do with weight itself, but with graciousness, and the functionality of spaces.





JOAQUIM TENREIRO

Pair of armchairs model “Concha”

Manufactured by Tenreiro Moveis e Decorações

Brasil, 1950

Pau marfim wood, upholstery

Measurements

80 cm x 86 cm x 72h cm x 41 cm seat height

31,49 in x 33,85 in x 28,34h in

Provenance

Private collection from Sao Paulo

Literature

Soraia Cals, Tenreiro, Rio de Janeiro, 2000

Biography

Joaquim Tenreiro (1906-1992) was among leading furniture designers and visual artists in modernist Brazilian furniture making in the mid-20th century. A forerunner in the use of rediscovered raw materials as well as the creator of a new formal language in 20th century Brazilian furniture design, he drew on the lessons of past furniture making as a vital source, not only in the mastery of technical and constructive solutions, but also in the aesthetic experience, craftsmanship, and the cultural meaning of his production. His exquisitely crafted pieces evoke a refined coexistence of traditional values and modern aesthetics, strongly bound to the Brazilian cultural milieu.

Born in Portugal to a family with a great tradition in furniture making, he moved to Brazil at the age of 22 and embraced a career as a designer by working at various furniture manufacturers such as Leandro Martins, Francisco Gomes and Laubisch & Hirth. Tenreiro proposed a contemporary language and advocated the idea that Brazilian furniture should be “formally light...A lightness which has nothing to do with weight itself, but with graciousness, and the functionality of spaces.





JOAQUIM TENREIRO

Four seats sofa

Manufactured by Tenreiro Moveis e Decorações

Brasil, 1950

Caviuna legs, Upholstery

Measurements

254 cm x 87 cm x 78h cm (39 cm seat height)

100 in x 34,25 in x 30,7 in (15,35 in seat height)

Edition

Unique piece

Provenance

Flavio Dumortout de Mendoça, close friend, patron, and lawyer of Joaquim Tenreiro (Rio de Janeiro)

Certificate

Accompanied by a certificate of authenticity by Flavio Dumortout's inheritor

Biography

Joaquim Tenreiro (1906-1992) was among leading furniture designers and visual artists in modernist Brazilian furniture making in the mid-20th century.

A forerunner in the use of rediscovered raw materials as well as the creator of a new formal language in 20th century Brazilian furniture design, he drew on the lessons of past furniture making as a vital source, not only in the mastery of technical and constructive solutions, but also in the aesthetic experience, craftsmanship, and the cultural meaning of his production. His exquisitely crafted pieces evoke a refined coexistence of traditional values and modern aesthetics, strongly bound to the Brazilian cultural milieu.

Born in Portugal to a family with a great tradition in furniture making, he moved to Brazil at the age of 22 and embraced a career as a designer by working at various furniture manufacturers such as Leandro Martins, Francisco Gomes and Laubisch & Hirth. Tenreiro proposed a contemporary language and advocated the idea that Brazilian furniture should be "formally light...A lightness which has nothing to do with weight itself, but with graciousness, and the functionality of spaces.





JOAQUIM TENREIRO

Pair of armchairs

Manufactured by Tenreiro Moveis e Decorações

Brasil, 1950

Caviuna wood legs, upholstery

Measurements

85 cm x 87 cm x 78h cm (39 cm seat height)

33,46 in x 34,25 in x 30,7h in (15,35 in seat height)

Provenance

Flavio Dumortout de Mendonça, close friend, patron, and lawyer of Joaquim Tenreiro (Rio de Janeiro)

Certificate

Accompanied by a certificate of authenticity by Flavio Dumortout's inheritor

Biography

Joaquim Tenreiro (1906-1992) was among leading furniture designers and visual artists in modernist Brazilian furniture making in the mid-20th century.

A forerunner in the use of rediscovered raw materials as well as the creator of a new formal language in 20th century Brazilian furniture design, he drew on the lessons of past furniture making as a vital source, not only in the mastery of technical and constructive solutions, but also in the aesthetic experience, craftsmanship, and the cultural meaning of his production. His exquisitely crafted pieces evoke a refined coexistence of traditional values and modern aesthetics, strongly bound to the Brazilian cultural milieu.

Born in Portugal to a family with a great tradition in furniture making, he moved to Brazil at the age of 22 and embraced a career as a designer by working at various furniture manufacturers such as Leandro Martins, Francisco Gomes and Laubisch & Hirth. Tenreiro proposed a contemporary language and advocated the idea that Brazilian furniture should be "formally light...A lightness which has nothing to do with weight itself, but with graciousness, and the functionality of spaces.





SERGIO RODRIGUES

Pair of shelves model "Georges Nelson"

Manufactured by Oca

Brasil, 1965

Jacaranda wood, chrome metal frame and leather

Measurements

250 cm x 50 cm x 30 cm height

98,4 in x 19,6 in x 11,8 in height

Literature

Sergio Rodrigues, catalogue raisonné, Edition Icatu, 2000, Rio de Janeiro, page 263.

Biography

Sergio Rodrigues was born in Rio de Janeiro in 1927. After graduating in 1952 from the Faculdade Nacional de Arquitetura, he assisted in opening Moveis Artesanal Paranaense, the first modern art and furniture store in Curitiba in Brazil. In 1955, Rodrigues founded Oca, one of the most influential modern furniture companies in Brazil. Amongst his wellknown works are pieces of furniture designed for the Brazilian Embassy in Rome, for the UNB (Brasília University) and the Teatro Nacional (National Theater in Brasília). The designer has worked closely with Oscar Niemeyer, as the latter's interior designer of choice for his buildings in Brasília.



SERGIO RODRIGUES

Pair of shelves model "Georges Nelson"

Manufactured by Oca

Brasil, 1965

Jacaranda wood, chrome metal frame and leather

Measurements

250 cm x 50 cm x 30 cm height

98,4 in x 19,6 in x 11,8 in height

Literature

Sergio Rodrigues, catalogue raisonné, Edition Icatu, 2000, Rio de Janeiro, page 263.

Biography

Sergio Rodrigues was born in Rio de Janeiro in 1927. After graduating in 1952 from the Faculdade Nacional de Arquitetura, he assisted in opening Moveis Artesanal Paranaense, the first modern art and furniture store in Curitiba in Brazil. In 1955, Rodrigues founded Oca, one of the most influential modern furniture companies in Brazil. Amongst his wellknown works are pieces of furniture designed for the Brazilian Embassy in Rome, for the UNB (Brasília University) and the Teatro Nacional (National Theater in Brasília). The designer has worked closely with Oscar Niemeyer, as the latter's interior designer of choice for his buildings in Brasília.





SERGIO RODRIGUES

Pair of table lamps

Manufactured by Oca

Brasil, 1965

Chrome-plated steel, jacaranda, linen

Measurements

18,5 in diameter x 46 in height

47,1 cm diameter x 117 cm height

Literature

Sergio Rodrigues, Soraia Cals, Icatu publishers, page 190

Provenance

Private collection, Sao Paulo

Biography

Sergio Rodrigues was born in Rio de Janeiro in 1927. After graduating in 1952 from the Faculdade Nacional de Arquitetura, he assisted in opening Moveis Artesanal Paranaense, the first modern art and furniture store in Curitiba in Brazil. In 1955, Rodrigues founded Oca, one of the most influential modern furniture companies in Brazil. Amongst his wellknown works are pieces of furniture designed for the Brazilian Embassy in Rome, for the UNB (Brasilia University) and the Teatro Nacional (National Theater in Brasilia). The designer has worked closely with Oscar Niemeyer, as the latter's interior designer of choice for his buildings in Brasilia.





SERGIO RODRIGUES

Round dining table model "Stella"

Manufactured by Oca

Brasil, 1956

Jacaranda wood, brass, iron

Measurements

122 cm diameter x 73h cm

48 in diameter x 28,5h in

Literature

Sergio Rodrigues, Fernandez, ppg. 212, 270

Biography

Sergio Rodrigues was born in Rio de Janeiro in 1927. After graduating in 1952 from the Faculdade Nacional de Arquitetura, he assisted in opening Moveis Artesanal Paranaense, the first modern art and furniture store in Curitiba in Brazil. In 1955, Rodrigues founded Oca, one of the most influential modern furniture companies in Brazil. Amongst his wellknown works are pieces of furniture designed for the Brazilian Embassy in Rome, for the UNB (Brasília University) and the Teatro Nacional (National Theater in Brasília). The designer has worked closely with Oscar Niemeyer, as the latter's interior designer of choice for his buildings in Brasília.





MAX INGRAND

Mirror

Manufactured by Fontana Arte
Italy, 1950
Curve colored glass, mirror

Measurements

111 cm x 50,5 cm
43,70 in x 19,88 in

Details

Frame with manufacturer's label 'Luigi Fontana'.

Biography

This famous master glassmaker and Frenchman, was artistic director of Fontana Arte during the decade starting in 1954. During those years he designed authentic classics in the world of design such as the Fontana table lamp which takes its name from the company and remains one of their best sellers to this day. His specialization in the decorative arts was formed in the school of Fine Arts in Paris under the guidance of great artists like Jacques Gruber and Charles Lemaire. He has done numerous projects of artistic glasswork for religious buildings, hotels and public environments, and has been awarded with the Legion of Honor in France.

History

Fontana Arte born in 1931 in Milan by the collaboration between Luigi Fontana and Gio Ponti, who shortly after will be accompanied by Pietro Chiesa, extraordinary glass craftsman. In fact the roots of Fontana Arte depart as many as 50 years before, when the young Luigi Fontana founded the Fontana Luigi & Compagni, an industry for the production of sheets of glass to building use. The company will acquire importance and fame, so much so that in 1910 the French group Saint Gobain buys the majority and Luigi Fontana retains the role of artistic director. Twenty years later, in 1930 he will begin the artistic collaboration with the young architect Gio Ponti (artistic director of Richard Ginori). In 1931 Gio Ponti becomes the new artistic director of Fontana Luigi Società Anonima. In 1933 Ponti and Fontana founded the Fontana Arte, a business unit specialized in the production of lamps and glass furniture. During the same year was acquired the workshop of Pietro Chiesa, craftsman of the highest level, specialized in the manufacturing of glass and slabs stained glass. Between 1933 and 1948 the artistic direction was entrusted to Pietro Chiesa, and in a short time the company acquires international fame. The activities start again after World War II in 1948 under the artistic direction of Max Ingrand, who replaced Pietro Chiesa after his death in that year. Ingrand remains like artistic director until 1968.





ROBERT MATHIEU (1921-2002)

Floor lamp model 56 or "Pendulum"

Manufactured by Arteluce

France, 1952

Brass, fabric

Measurements

190 cm height

74,8 in height

Provenance

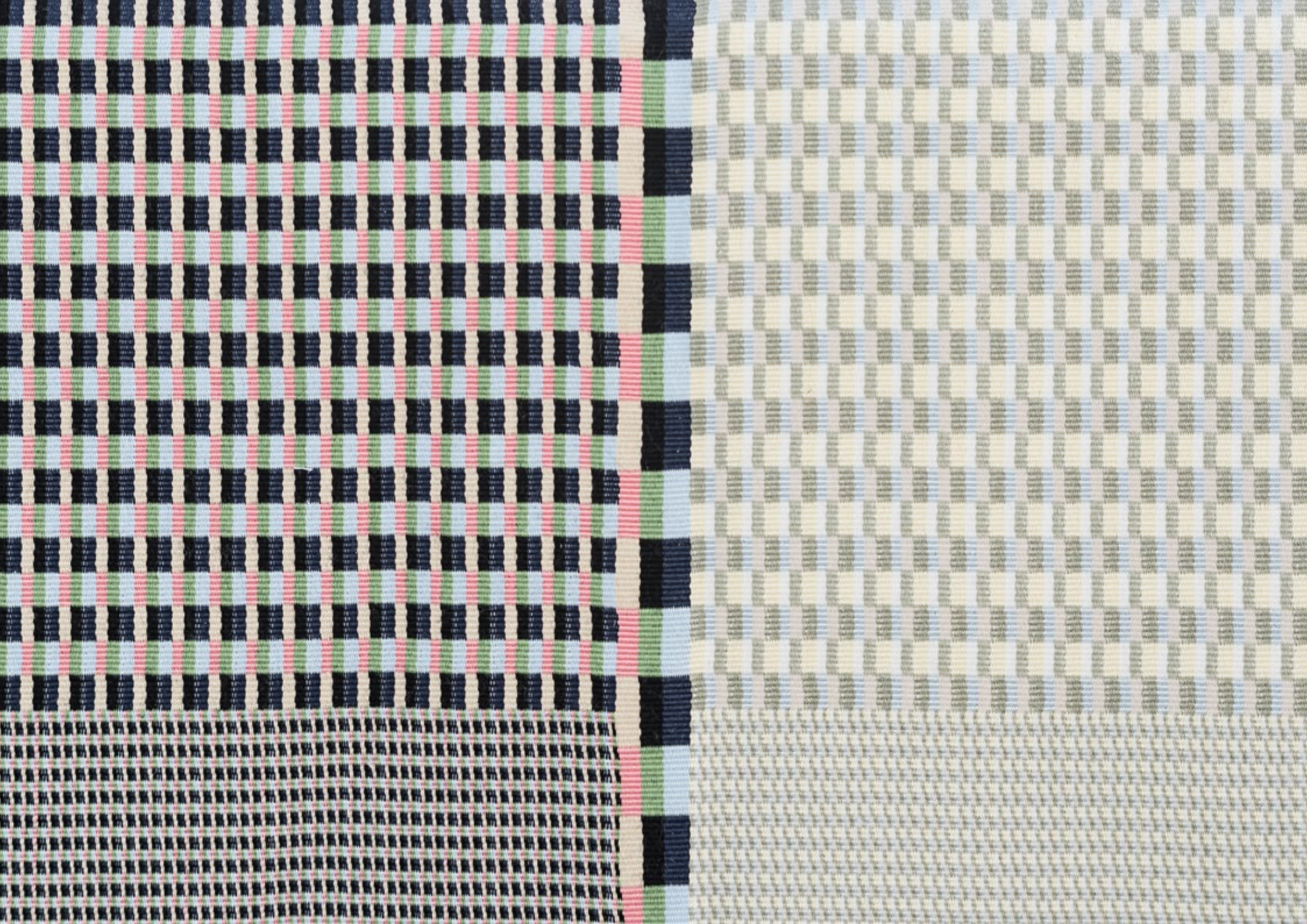
Private collection, Paris.

Bio

Robert Mathieu founded his own company, both producing and creating pieces. He quickly became recognized as an important figure in the modern design movement in France, similar to the other producers of that time, like Disderot and Luminale. He would first create practical structures before imagining the rest of the form, as we can understand with the name of his company : «r.mathieu : luminaire rationel» Robert Mathieu was the principal designer of the r.mathieu design company but he was associated sometimes with other important designers, such as Michel Buffet who created a famous floor light for the company.

CONTEMPORARY







JULIE RICHOS

Screen

Manufactured by Side Gallery
Barcelona, 2019
Fabric, metal

Measurements

226,5 cm x 2,5 cm x 105h cm (total)
75,5 cm x 2,5 cm x 105h cm (each panel)

88,97 in x 0,98 in x 41,33h in (total)
29,52 in x 0,98 in x 41,33h in (each panel)

Edition

Edition of 7

Details

Custom sizes by private commission.

Biography

Julie Richoz (1990) is a Swiss designer working in Paris. After graduating from ECAL, Ecole Cantonale d'Art de Lausanne, she started working for Pierre Charpin as a project assistant.

In 2012 she set up her design studio in Paris where she enjoys with curiosity and sensibility to develop her own language through objects.

Richoz has won the "Grand Prix" of the Design Parade 2012 at the Villa Noailles. She was a designer-in-residency at Sèvres, Cite de la céramique, as well as at CIRVA, international research center on arts and glass, Marseille where she was given the chance to explore the materials and the savoir-faire behind them. In 2015, she received a Swiss Design Award, which is the Switzerland's leading national design competition organized annually by the FOC (Federal Office of Culture) since 1918.







JULIE RICHOSZ (1990-)

Vase model "Isla"
Manufactured by Nouvel
Mexico, 2019
Glass

Measurements

SMALL

23,8 cm x 10 cm x 27,8h cm
93,7 in x 3,93 in x 109,44h in

BIG

31,5 cm x 13 cm x 36,5h cm
124 in x 5,11 in x 143,7h in

Biography

Julie Richoz (1990) is a Swiss designer working in Paris. After graduating from ECAL, Ecole Cantonale d'Art de Lausanne, she started working for Pierre Charpin as a project assistant.

In 2012 she set up her design studio in Paris where she enjoys with curiosity and sensibility to develop her own language through objects.

Richoz has won the "Grand Prix" of the Design Parade 2012 at the Villa Noailles. She was a designer-in-residency at Sèvres, Cité de la céramique, as well as at CIRVA, international research center on arts and glass, Marseille where she was given the chance to explore the materials and the savoir-faire behind them. In 2015, she received a Swiss Design Award, which is the Switzerland's leading national design competition organized annually by the FOC (Federal Office of Culture) since 1918.





JULIE RICHOSZ (1990-)

Vase model "Isla"
Manufactured by Nouvel
Mexico, 2019
Glass

Measurements

SMALL

23,8 cm x 10 cm x 27,8h cm
93,7 in x 3,93 in x 109,44h in

BIG

31,5 cm x 13 cm x 36,5h cm
124 in x 5,11 in x 143,7h in

Biography

Julie Richoz (1990) is a Swiss designer working in Paris. After graduating from ECAL, Ecole Cantonale d'Art de Lausanne, she started working for Pierre Charpin as a project assistant. In 2012 she set up her design studio in Paris where she enjoys with curiosity and sensibility to develop her own language through objects.

Richoz has won the "Grand Prix" of the Design Parade 2012 at the Villa Noailles. She was a designer-in-residency at Sèvres, Cité de la céramique, as well as at CIRVA, international research center on arts and glass, Marseille where she was given the chance to explore the materials and the savoir-faire behind them. In 2015, she received a Swiss Design Award, which is the Switzerland's leading national design competition organized annually by the FOC (Federal Office of Culture) since 1918.





DANIEL STEEGMANN MANGRANÉ

Chandelier model 2
Produced in exclusive for SIDE GALLERY
Barcelona, 2019
Blown glass

Measurements
39,5 cm diameter x 77,5 cm height
15,55 in diameter x 30,51 in height

Edition
Unique pieces, available in several sizes

Bio

Daniel Steegmann Mangrané is a Catalan artist based in Rio de Janeiro, Brazil. His body of work encompasses different formats based on subtle and poetic experimentation that questions the relationship between language and the world. His artwork, mainly conceptual, shows concern with existence and the specific characteristics of objects, at the same time activating abstract language to generate thought, while using the idea of unstable meaning and dematerialized constructions as a way of addressing questions of the objects.

Recently Steegmann has had exhibitions at CRAC Alsace (2015), A Certain Lack of Coherence in Oporto (2013) and Halfhouse (Barcelona, 2011), and has taken part in group shows such as The Generational Triennial, New Museum (New York, 2015), the 12th Cuenca Biennial (Ecuador, 2014), the 9th Mercosul Biennial (Porto Alegre, 2013) and the 30th Sao Paulo Biennial (2012).





DANIEL STEEGMANN MANGRANÉ

Chandelier model 3
Manufactured by SIDE GALLERY
Barcelona, 2019
Blown glass

Measurements
39 cm x 39 cm x 90h cm
15,35 in. x 15,35 in. x 35,43 in.

Edition
Unique pieces, available in several sizes

Bio
Daniel Steegmann Mangrané is a Catalan artist based in Rio de Janeiro, Brazil. His body of work encompasses different formats based on subtle and poetic experimentation that questions the relationship between language and the world. His artwork, mainly conceptual, shows concern with existence and the specific characteristics of objects, at the same time activating abstract language to generate thought, while using the idea of unstable meaning and dematerialized constructions as a way of addressing questions of the objects. Recently Steegmann has had exhibitions at CRAC Alsace (2015), A Certain Lack of Coherence in Oporto (2013) and Halfhouse (Barcelona, 2011), and has taken part in group shows such as The Generational Triennial, New Museum (New York, 2015), the 12th Cuenca Biennial (Ecuador, 2014), the 9th Mercosul Biennial (Porto Alegre, 2013) and the 30th Sao Paulo Biennial (2012).





SABINE MARCELIS (1984-)

Floor lamps model "Totem"
Manufactured by Sabine Marcelis
Produced in exclusive for SIDE GALLERY
Rotterdam, The Netherlands 2018
Resin, Neon (+transformer)

Measurements

18 cm x 17 cm x 190h cm
7,08 in x 6,69 in x 74h in

18 cm x 17 cm x 170h cm
7,08 in x 6,69 in x 66,92h in

30 cm x 17 cm x 60 cm
11,81 in x 6,69 in x 23,62 in

Edition

Limited edition of 12 + 2AP

Bio

Sabine Marcelis is a designer living and working in Rotterdam, the Netherlands.

Raised in New Zealand, she studied industrial design for two years at Victoria University of Wellington, and continued her studies at the Design Academy Eindhoven, where she graduated in 2011. Since graduating, she has been operating Studio Sabine Marcelis, working within the fields of product, installation and spacial design with a strong focus on materiality. Her work is characterised by pure forms which highlight material properties.





SABINE MARCELIS (1984-)

Floor lamps model "Totem 170" Frosty
Manufactured by Sabine Marcelis
Produced in exclusive for SIDE GALLERY
Rotterdam, The Netherlands 2018
Resin, Neon (+transformer)
Available in several colors

Measurements

18 cm x 17 cm x 170h cm
7,08 in x 6,69 in x 66,92h in

Edition

Limited edition of 12 + 2AP

Concept

Produced exclusively for SIDE GALLERY, Totem lights are a continuation of the designer's fascination with the interaction between light and cast resin, and are a new truly three-dimensional evolution of her past exploration on the theme inviting the viewer to a unique visual experience.

Bio

Sabine Marcelis is a designer living and working in Rotterdam the Netherlands.

Raised in New Zealand, she studied industrial design for two years at Victoria University of Wellington, and continued her studies at the Design Academy Eindhoven, where she graduated in 2011. Since graduating, she has been operating Studio Sabine Marcelis, working within the fields of product, installation and spacial design with a strong focus on materiality. Her work is characterised by pure forms which highlight material properties.





SABINE MARCELIS (1984-)

Floor lamps model "Totem 60"
Manufactured by Sabine Marcelis
Produced in exclusive for SIDE GALLERY
Rotterdam, The Netherlands 2018
Resin, Neon (+transformer)
Available in several colors

Measurements
30 cm x 17 cm x 60 cm
11,81 in x 6,69 in x 23,62 in

Edition
Limited edition of 12 + 2AP

Concept
Produced exclusively for SIDE GALLERY, Totem lights are a continuation of the designer's fascination with the interaction between light and cast resin, and are a new truly three-dimensional evolution of her past exploration on the theme inviting the viewer to a unique visual experience.

Bio
Sabine Marcelis is a designer living and working in Rotterdam the Netherlands.
Raised in New Zealand, she studied industrial design for two years at Victoria University of Wellington, and continued her studies at the Design Academy Eindhoven, where she graduated in 2011. Since graduating, she has been operating Studio Sabine Marcelis, working within the fields of product, installation and spacial design with a strong focus on materiality. Her work is characterised by pure forms which highlight material properties.





SABINE MARCELIS (1984-)

Floor lamps model "Totem 45"
Manufactured by Sabine Marcelis
Produced in exclusive for SIDE GALLERY
Rotterdam, The Netherlands 2018
Resin, Neon (+transformer)
Available in several colors

Measurements

15 cm x 17 cm x 45 cm
5,9 in x 6,69 in x 17,71 in

Edition

Limited edition of 12 + 2AP

Concept

Produced exclusively for SIDE GALLERY, Totem lights are a continuation of the designer's fascination with the interaction between light and cast resin, and are a new truly three-dimensional evolution of her past exploration on the theme inviting the viewer to a unique visual experience.

Bio

Sabine Marcelis is a designer living and working in Rotterdam the Netherlands.

Raised in New Zealand, she studied industrial design for two years at Victoria University of Wellington, and continued her studies at the Design Academy Eindhoven, where she graduated in 2011. Since graduating, she has been operating Studio Sabine Marcelis, working within the fields of product, installation and spacial design with a strong focus on materiality. Her work is characterised by pure forms which highlight material properties.





BENTE SKJØTTGAARD (1961-)

White cloud lamp no 1747 and 1748

Manufactured by Bente Skottgaard

Produce in exclusive for SIDE GALLERY

Frederiksberg, Denmark, 2019

Stoneware and glaze Light bulb with wire

Measurements

Ø31 cm x 26 h cm / Ø12.20 in. x 10.23 h in.

Ø28 cm x 25 h cm / Ø11.02 in. x 9.84 h in.

Edition

Unique piece

Bio

Bente Skjøttgaard (b.1961) makes highly textured ceramic sculptures with an aura of equal parts toughness and her sense for an underlying poetic delicacy. She is constantly testing the performing abilities of the raw materials, the works relying on both her fresh, sketchy approach to modelling in the wet clay and the unpredictability of her firings with glazes at high temperatures. Out of her immediate control, the materials are left in the kiln to perform on the basis of her previous experiences and her infinite curiosity for new unexpected results. Bente Skjøttgaard keeps adding new highly personal chapters to the infinite story that culture and nature share, whilst continuing her exploration of ceramic possibilities.





DELOSS WEBBER

Deep into the Forest (large) & Humback (medium)

Manufactured by Deloss Webber

Seattle (USA), 2018

Basalt, wood, bamboo, cane, pigment (large)

Granite, wood, cane, rattan (medium)

Measurements

Large

35,5 cm x 15 cm x 55,8h cm

14 in x 6 in x 22h in

Medium

40 cm x 17,7 cm x 55h cm

16 in x 7 in x 22h in

Concept

The artist views his treatment of the stones as an expression of reverence for nature. He takes into consideration the individual qualities of each stone, its contours, color, and size, and melds them with his own design of wrapped and woven fibers. He unites the organic with the inorganic creating a new form.

Awards

Finalist Loewe Craft Prize 2019

Biography

A second-generation rattan weaver, Deloss Webber not only makes his livelihood from fiber arts, but also has been exposed to and influenced by numerous ethnic forms of weaving since an early age. Webber was born in 1951 and spent his childhood in Northern Africa, Spain, and throughout the United States. He learned various weaving techniques from his mother and for over 30 years has continued to evolve as an artist by not only the ongoing development of his fiber sculptures, but by also challenging his own artistic parameters by experimenting in other mediums.





DELOSS WEBBER

Stone Bottle series

Manufactured by Deloss Webber
Seattle (USA), 2018
Granite, rattan, wood, pigment

Measurements

Small

20 cm x 11 cm x 35h cm
7,87 in x 4,33 in x 13,77 in

Medium

21 cm x 12 cm x 38h cm
8,26 in x 4,72 in x 14,96 in

Large

33 cm x 12 cm x 39h cm
12 in x 4,72 in x 15,35h in

Concept

The artist views his treatment of the stones as an expression of reverence for nature. He takes into consideration the individual qualities of each stone, its contours, color, and size, and melds them with his own design of wrapped and woven fibers. He unites the organic with the inorganic creating a new form.

Awards

Finalist Loewe Craft Prize 2019

Biography

A second-generation rattan weaver, Deloss Webber not only makes his livelihood from fiber arts, but also has been exposed to and influenced by numerous ethnic forms of weaving since an early age. Webber was born in 1951 and spent his childhood in Northern Africa, Spain, and throughout the United States. He learned various weaving techniques from his mother and for over 30 years has continued to evolve as an artist by not only the ongoing development of his fiber sculptures, but by also challenging his own artistic parameters by experimenting in other mediums.



Booth B-25
Sep 30 – Oct 6 2019
Berkeley Square
London W1

SIDE GALLERY

80 Enric Granados
08008 Barcelona
+34 931 621 575
+34 653 238 311
info@side-gallery.com
www.side-gallery.com

